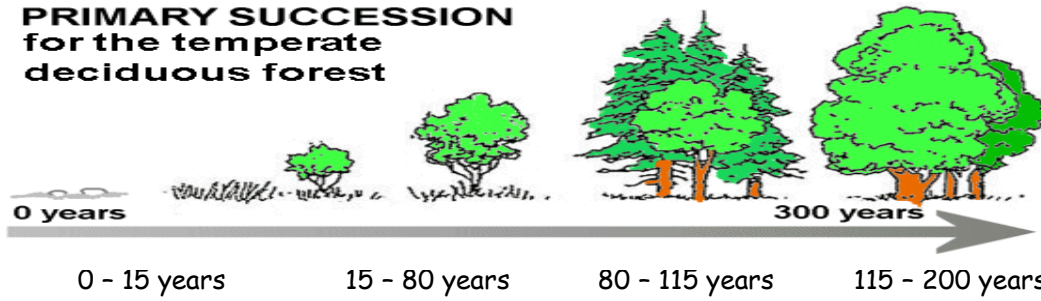


SECTION
14.5

ECOLOGICAL SUCCESSION
Power Notes

Primary Succession: The establishment and development of an ecosystem in an area that was previously uninhabited.

PRIMARY SUCCESSION
for the temperate
deciduous forest



Secondary Succession: The re-establishment of a damaged ecosystem where the soil was left intact.

